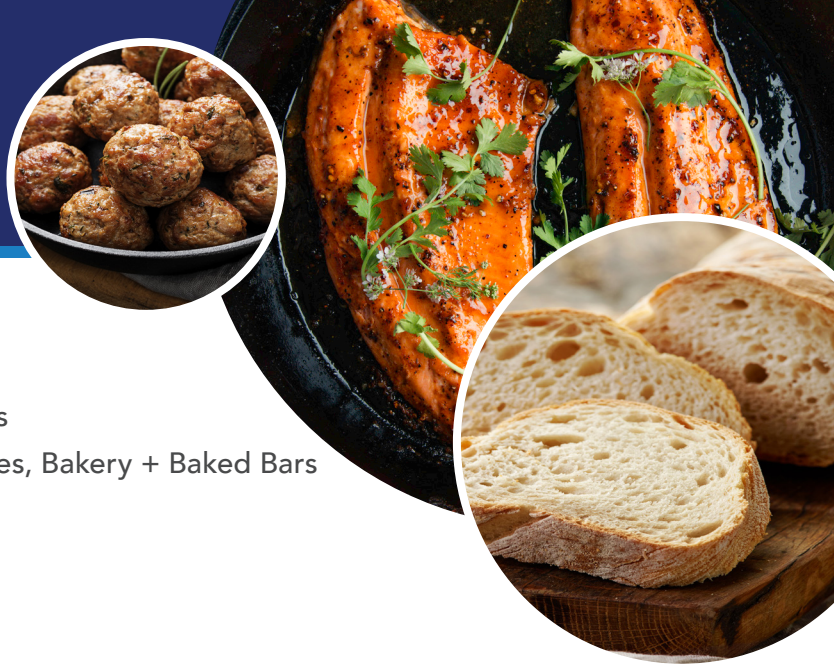


# C44H054S

Non-GMO Soybean Variety



## KEY CHARACTERISTICS:

### Maturity 4.4

Market Application: High Oleic + Low Anti-Nutritionals

End-use Application: Meat Extension, Meat Alternatives, Bakery + Baked Bars

- Bushy plant type for all row widths.
- Possesses STS trait for more flexibility.
- Consistent performance across all environments.

## VARIETY CHARACTERISTICS\*

Plant Height.....	Med
Plant Type.....	Med Bushy
Row Width.....	All
Standability.....	Excellent
Flower Color.....	Purple
Pubescence.....	Tawny
Pod Color.....	Brown
Hilum Color.....	Black
STS.....	Tolerant

## DISEASE & PEST RATINGS\*

Soybean Cyst Nematode.....	R
Sudden Death Syndrome.....	MR
Frogeye Leaf Spot.....	MR

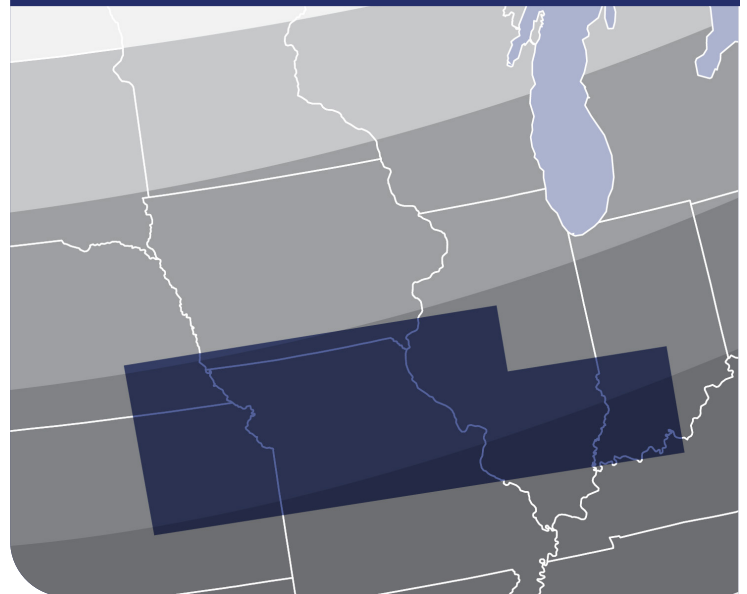
\*1-5 rating with 1 being Excellent; R = Resistant; MR = Moderately Resistant

## VALUE ADDED CHARACTERISTICS\*\*

Protein.....	42 - 43%
Oil.....	22 - 23%

\*\*Protein and oil values are reported on a dry weight basis (DWB). Environmental conditions may cause protein and oil composition to fluctuate.

## MARKET ZONE:



The high oleic soybean trait in these seeds was made possible by Missouri soybean farmers and their checkoff and is protected by one or more of the following U.S. Patent No(s): 9,035,129; 9,198,365; 10,087,454; 10,329,576.



Trademark of Dow AgroSciences, DuPont, or Pioneer and their affiliated companies or respective owners.

