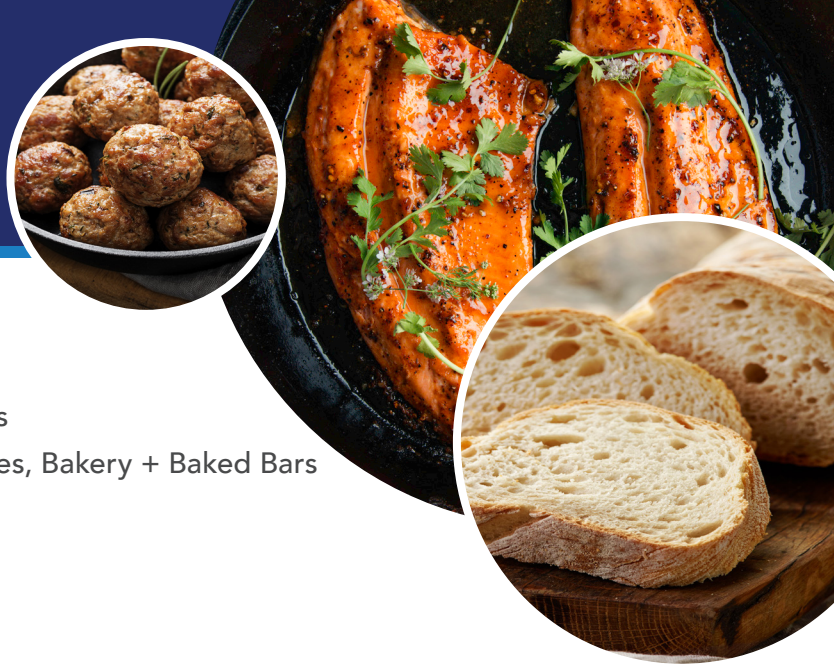


# C38H052S

Non-GMO Soybean Variety



## KEY CHARACTERISTICS:

### Maturity 3.8

Market Application: High Oleic + Low Anti-Nutritionals

End-use Application: Meat Extension, Meat Alternatives, Bakery + Baked Bars

- Performs well on your best soils.
- Handles higher plant populations.
- Bushy plant type for all row widths.

## VARIETY CHARACTERISTICS\*

|                   |           |
|-------------------|-----------|
| Plant Height..... | Med       |
| Plant Type.....   | Med       |
| Row Width.....    | All       |
| Standability..... | Good      |
| Flower Color..... | White     |
| Pubescence.....   | Lt. Tawny |
| Pod Color.....    | Brown     |
| Hilum Color.....  | Black     |
| STS.....          | Tolerant  |

## DISEASE & PEST RATINGS\*

|                            |    |
|----------------------------|----|
| Soybean Cyst Nematode..... | R  |
| Brown Stem Rot.....        | R  |
| Sudden Death Syndrome..... | MR |

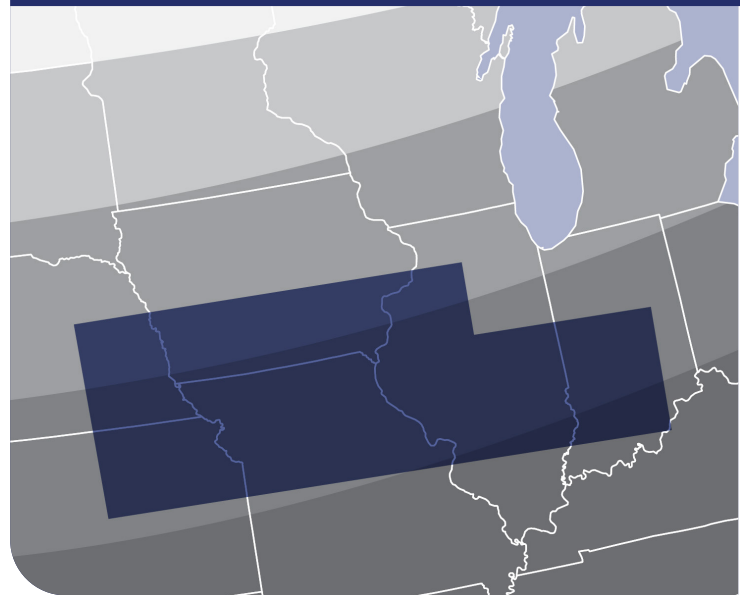
\*1-5 rating with 1 being Excellent; R = Resistant; MR = Moderately Resistant

## VALUE ADDED CHARACTERISTICS\*\*

|              |          |
|--------------|----------|
| Protein..... | 42 - 43% |
| Oil.....     | 22 - 23% |

\*\*Protein and oil values are reported on a dry weight basis (DWB). Environmental conditions may cause protein and oil composition to fluctuate.

## MARKET ZONE:



The high oleic soybean trait in these seeds was made possible by Missouri soybean farmers and their checkoff and is protected by one or more of the following U.S. Patent No(s): 9,035,129; 9,198,365; 10,087,454; 10,329,576.



Trademark of Dow AgroSciences, DuPont, or Pioneer and their affiliated companies or respective owners.

